



PAC-CLAD®

P E T E R S E N

A **CARLISLE** COMPANY



FOREST GREEN



HARTFORD GREEN



▲★ MILITARY BLUE



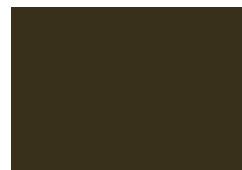
BERKSHIRE BLUE



▲★ SLATE BLUE



AWARD BLUE



▲ AGED BRONZE



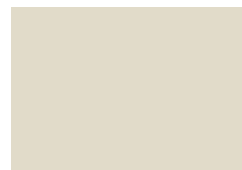
▲★ MEDIUM BRONZE



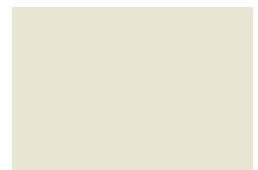
▲★ CARDINAL RED



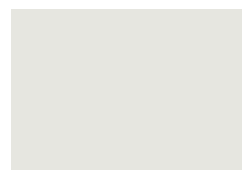
▲★ COLONIAL RED



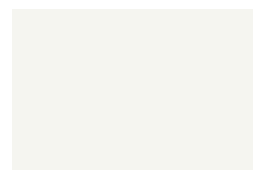
▲★ SANDSTONE



▲★ ALMOND



▲★ STONE WHITE

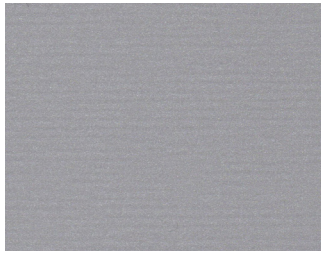


▲★ BONE WHITE

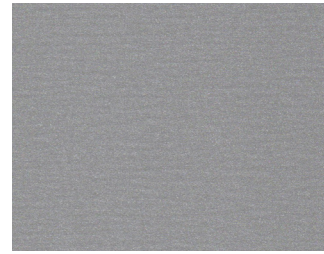
Color Guide

PAC-CLAD.COM

Premium Colors



●▲★☆☆ ANODIC CLEAR



●▲★☆☆ SILVERSMITH



●▲★☆☆ SILVER



●▲★☆☆ CHAMPAGNE



●▲★☆☆ ZINC



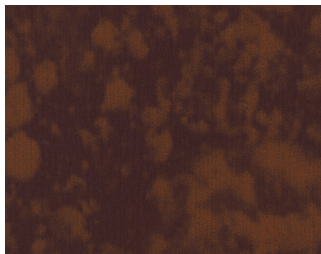
●▲★☆☆ WEATHERED ZINC



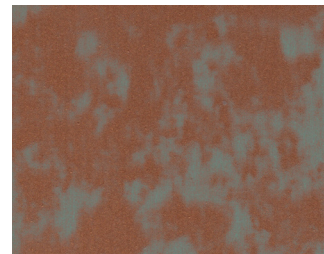
●▲★☆☆ COPPER PENNY



●▲★☆☆ AGED COPPER



●▲★☆☆ WEATHERED STEEL



●▲★☆☆ WEATHERED COPPER

Kynar 500® or Hylar 5000® pre-finished steel and aluminum for roofing, curtainwall and storefront applications.



- Metallic Colors
- ★ ENERGY STAR® Colors
- \$\$\$ Pricing
- ▲ Cool Colors
- 👑 Premium Colors

See back for color availability chart.

Standard Colors



▲★ PATINA GREEN



▲★ TEAL



▲★ HEMLOCK GREEN



▲★ FOREST GREEN



▲★ HARTFORD GREEN



▲★ EVERGREEN



▲★ HUNTER GREEN



▲★ ARCADIA GREEN



▲★ MILITARY BLUE



▲★ BERKSHIRE BLUE



▲ GRAPHITE



▲★ CHARCOAL



▲★ INTERSTATE BLUE



▲★ SLATE BLUE



▲★ AWARD BLUE



▲★ MATTE BLACK STEEL
▲★ BLACK ALUMINUM



▲★ DARK BRONZE



▲★ BURNISHED SLATE



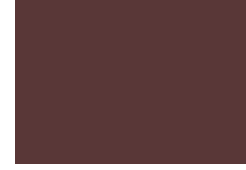
▲★ AGED BRONZE



▲★ MEDIUM BRONZE



▲★ MANSARD BROWN



▲★ BURGUNDY



▲★ TERRA COTTA



▲★ CARDINAL RED



▲★ COLONIAL RED



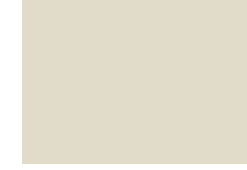
▲★ MIDNIGHT BRONZE



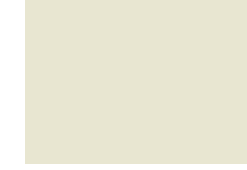
▲★ MUSKET GRAY



▲★ SIERRA TAN



▲★ SANDSTONE



▲★ ALMOND



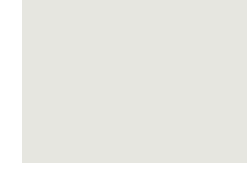
▲★ SLATE GRAY



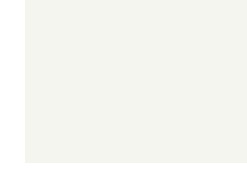
▲★ CITYSCAPE



▲★ GRANITE



▲★ STONE WHITE



▲★ BONE WHITE



IL: 800 PAC CLAD TX: 800 441 8661 MD: 800 344 1400
AZ: 833 750 1935 GA: 800 272 4482 MN: 877 571 2025

PAC-CLAD.COM

PAC-CLAD® Color Availability

PAC-CLAD STANDARD COLORS	REFLECTIVITY	EMISSION	3 YEAR EXPOSURE	SRI	STEEL			ALUMINUM			20-IN. COIL		ENERGY STAR
					24 GA.	22 GA.	.032	.040	.050	.063	24 GA.	.032	
AGED BRONZE	0.29	0.87	0.27	29	✓								
ALMOND	0.56	0.86	0.55	65	✓	✓	✓	✓	✓		✓		★
ARCADIA GREEN	0.29	0.87	0.29	29	✓		✓						★
AWARD BLUE***	0.24	0.86	0.23	22	✓		✓		✓				
BERKSHIRE BLUE*	0.30	0.87	0.27	31	✓								
BLACK ALUMINUM**	0.04	0.89	0.04	-2			✓	✓	✓	✓			
BONE WHITE	0.70	0.86	0.69	85	✓	✓	✓	✓	✓	✓	✓	✓	★
BURGUNDY	0.14	0.85	0.13	9	✓		✓		✓				
BURNISHED SLATE	0.32	0.87	0.31	33	✓								
CARDINAL RED***	0.44	0.86	0.44	49	✓		✓		✓				★
CHARCOAL	0.30	0.86	0.30	30	✓		✓	✓	✓		✓	✓	★
CITYSCAPE	0.49	0.86	0.50	56	✓	✓	✓	✓	✓		✓	✓	★
COLONIAL RED	0.31	0.86	0.31	31	✓		✓	✓	✓				★
DARK BRONZE	0.29	0.86	0.29	29	✓	✓	✓	✓	✓	✓	✓	✓	★
EVERGREEN	0.28	0.86	0.26	27	✓		✓						★
FOREST GREEN	0.10	0.86	0.10	4	✓	✓	✓	✓	✓				
GRANITE*	0.33	0.87	0.33	34	✓	✓	✓	✓	✓				★
GRAPHITE	0.29	0.87	0.28	29	✓								
HARTFORD GREEN	0.08	0.88	0.08	3	✓		✓	✓	✓				
HEMLOCK GREEN	0.31	0.87	0.30	32	✓		✓		✓				★
HUNTER GREEN	0.28	0.86	0.27	27	✓		✓						★
INTERSTATE BLUE	0.16	0.87	0.15	12	✓		✓		✓				
MANSARD BROWN	0.31	0.86	0.31	31	✓	✓	✓	✓	✓				★
MATTE BLACK STEEL**	0.26	0.86	0.25	25	✓	✓					✓		
MEDIUM BRONZE	0.30	0.87	0.29	31	✓	✓	✓	✓	✓	✓	✓	✓	★
MIDNIGHT BRONZE	0.06	0.87	0.06	0	✓			✓					
MILITARY BLUE	0.31	0.86	0.30	31	✓		✓						★
MUSKET GRAY	0.32	0.86	0.31	33	✓	✓	✓		✓				★
PATINA GREEN	0.33	0.86	0.32	34	✓		✓						★
SANDSTONE	0.48	0.86	0.48	54	✓	✓	✓	✓	✓	✓	✓	✓	★
SIERRA TAN	0.32	0.82	0.31	31	✓	✓	✓	✓	✓		✓	✓	★
SLATE BLUE	0.28	0.86	0.27	27	✓		✓						★
SLATE GRAY	0.38	0.86	0.37	41	✓	✓	✓	✓	✓		✓	✓	★
STONE WHITE	0.69	0.86	0.67	84	✓	✓	✓	✓	✓	✓	✓	✓	★
TEAL	0.32	0.86	0.32	33	✓		✓						★
TERRA COTTA	0.34	0.87	0.33	36	✓		✓		✓		✓	✓	★
PAC-CLAD PREMIUM COLORS													
AGED COPPER	0.55	0.80	0.53	62	✓		✓						★
ANODIC CLEAR	0.32	0.83	0.31	31				✓					
CHAMPAGNE	0.50	0.85	0.49	57	✓		✓	✓	✓				★
COPPER PENNY	0.52	0.81	0.52	58	✓		✓	✓	✓		✓		★
SILVER	0.47	0.87	0.46	53	✓	✓	✓	✓	✓		✓	✓	★
SILVERSMITH	0.32	0.88	0.32	34				✓					
WEATHERED COPPER	0.45	0.88	N/A	51	✓								
WEATHERED STEEL	0.32	0.89	N/A	34	✓								
WEATHERED ZINC	0.48	0.82	0.46	53	✓	✓	✓		✓				★
ZINC	0.42	0.82	0.38	45	✓		✓	✓	✓				★
CLEAR-COAT ACRYLIC FINISH (NON-KYNAR)													
GALVALUME PLUS	0.68	0.14	0.55	57	✓	✓					✓		★

PAC-CLAD Premium finishes are available from stock at a moderate extra cost. PAC-CLAD Copper Penny is a Non-Weathering finish. Solar Reflectance Index calculated according to ASTM E-1980.

*Low Gloss/Low Sheen, 70% PVDF finish ** Appearance differs for Black Aluminum and Matte Black Steel *** 10-year finish warranty

ENERGY STAR PERFORMANCE CRITERIA:

Emissivity uses ASTM C1371 Reflectivity uses ASTM C1549.

TECHNICAL DATA FOR KYNAR 500/HYLAR 5000 COATING:

- ▶ South Florida Exposure: Color (ASTM D 2244) - No more than 5ΔE Hunter units at 20 years; Chalk (ASTM D 4214) - Rating no less than 8 at 20 years; Film integrity - 20 years.
- ▶ Accelerated Weathering (ASTM D 4587, ASTM G 154): 5000 Hours; Chalk, per ASTM D 4214, rating of 6 or better; Color, per ASTM D 2244, < 5ΔE (Hunter Units) color change.

- ▶ Humidity Resistance (ASTM D 2247): Galvalume or HDG, 100% RH, 2000 hours - No field blisters; Aluminum, 100% RH, 3000 hours - No field blisters
- ▶ Salt Spray Resistance (ASTM B 117): Aluminum, 3000 hours, Galvalume or HDG, 1000 hours - Creep from scribe no more than 1/16", no field blisters
- ▶ Chemical/Acid Pollution Resistance (ASTM D 1308): Pass
- ▶ T-Bend (ASTM D 4145): 1T - 3T with no loss of adhesion
- ▶ Pencil hardness (ASTM D 3363): HB - 2H
- ▶ Specular Gloss (ASTM D 523) @ 60 degrees: Typical - 20 - 35

- ▶ Abrasion Resistance (ASTM D 968): 67 +/- 10 liters
- ▶ Cross Hatch Adhesion (ASTM D 3359): No loss of adhesion
- ▶ Reverse Impact (ASTM D 2794): Galvalume or HDG, 2x metal thickness inch-pounds, no loss of adhesion; Aluminum, 1.5x metal thickness inch-pounds, no loss of adhesion
- ▶ Flame Test (ASTM E 84): Class A Coating